

ENERGETICKÉ VYUŽITÍ ODPADŮ V LOKÁLNÍCH ZDROJÍCH

TECHNOLOGIE I REALIZACE VYNCKE



vyncke.com

CLEAN ENERGY TECHNOLOGY

VYNCKE

Rodinná společnost z Belgie s více než **100 lety zkušeností** s výrobou energie z biomasy a odpadu.



1st GENERATION

Louis VYNCKE



1912-1940

3rd GENERATION

Dirk VYNCKE



1972-2002

1940-1972



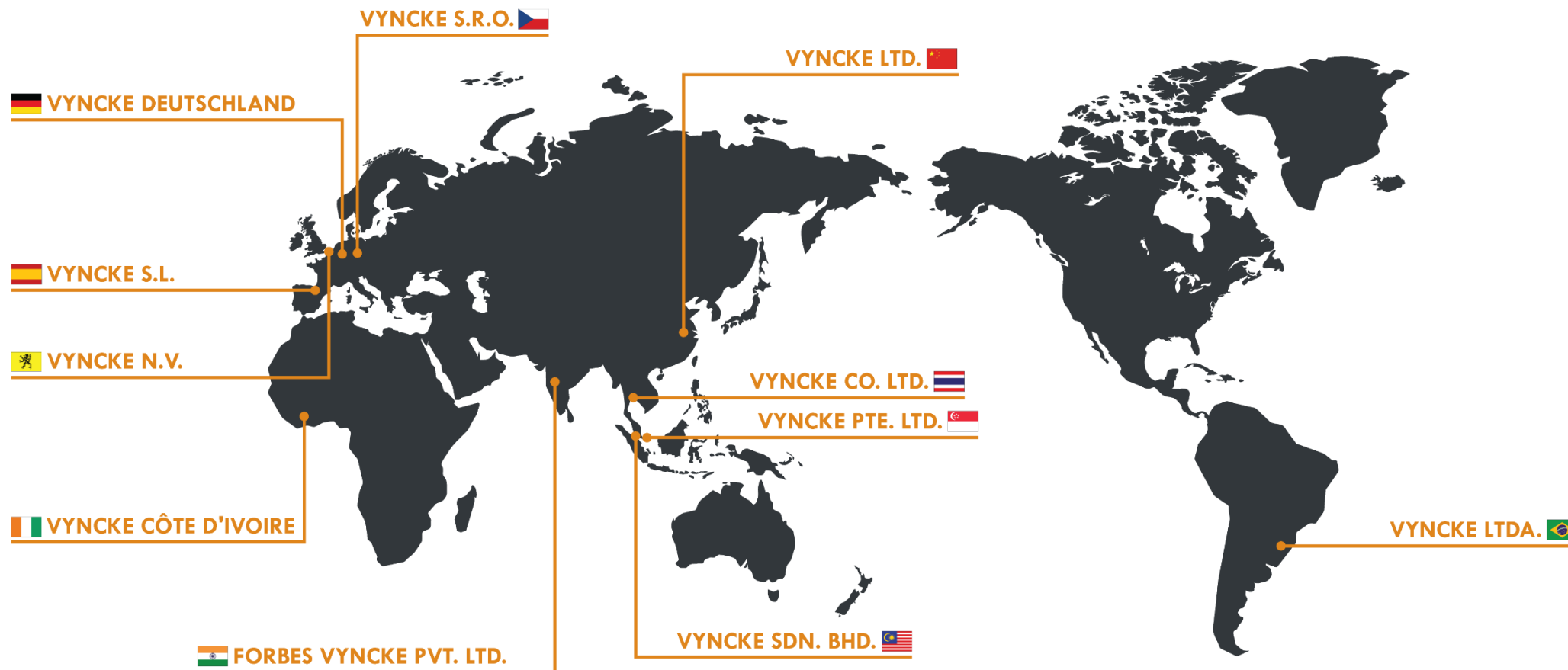
Michel VYNCKE
2nd GENERATION

2002-...



Peter & Dieter VYNCKE
4th GENERATION









COMBUSTION

We are true firemakers! Helping you harness energy through combustion is what we do for a living.

INDUSTRY

Our mission is to energize the industry with respect for our nest.

BIOMASS & WASTE

Organic & solid matter used as a fuel provides a CO₂ neutral source of energy.

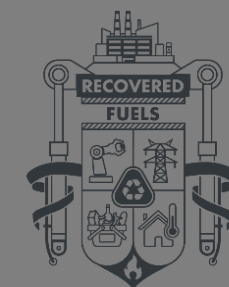
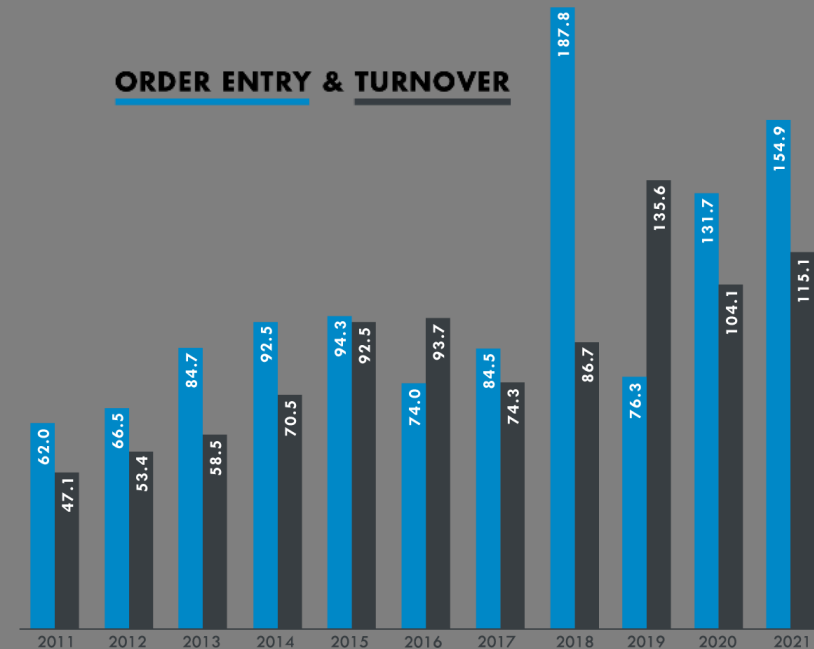
CLEAN

ENERGY

TECHNOLOGY



ORDER ENTRY & TURNOVER





TEPLOVODNÍ KOTLE | 1 - 80 MW



ABSORPČNÍ CHLADIČE | 1 - 60 MW



PARNÍ KOTLE | 1 - 100 MW



OLEJOVÉ KOTLE | 3 - 40 MW



GENERÁTORY PLYNU | 1 - 100 MW



ELEKTRICKÁ ENERGIE | 0.5 – 20 MWe



DŘEVAŘSKÝ PRŮMYSL



**ZEMĚDĚLSKO-
POTRAVINÁŘSKÝ
PRŮMYSL**



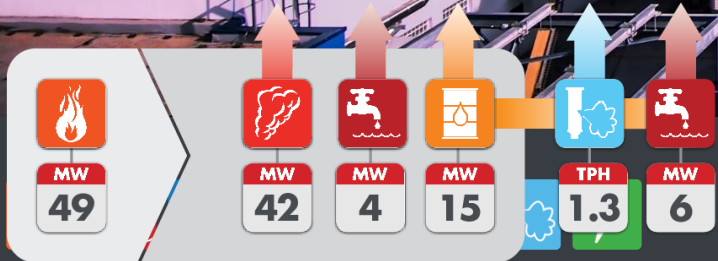
ENERGETICKÝ SEKTOR





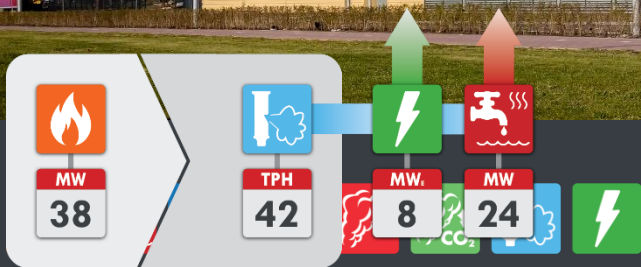
IKEA Industry

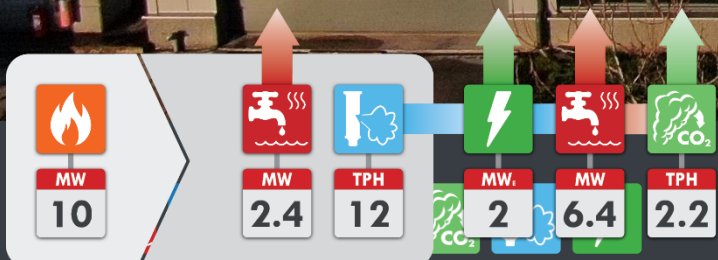
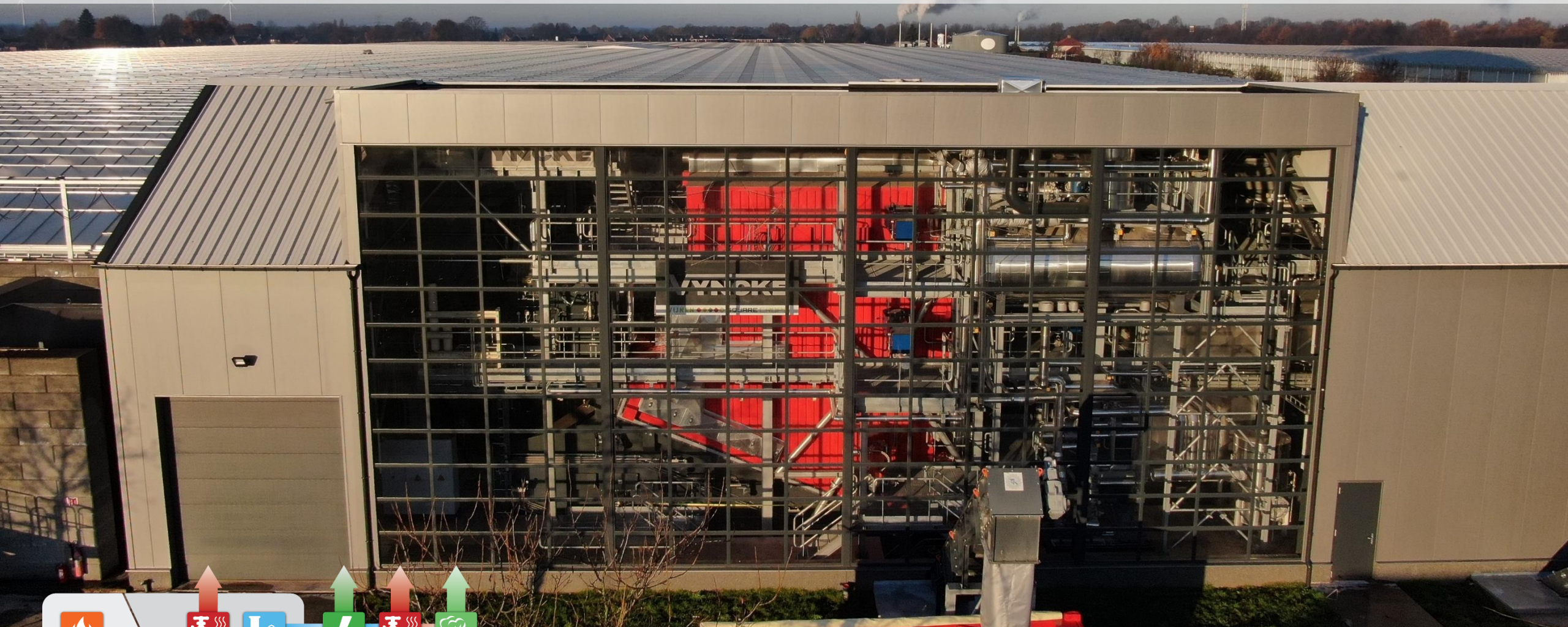
MALACKY | SLOVAKIA

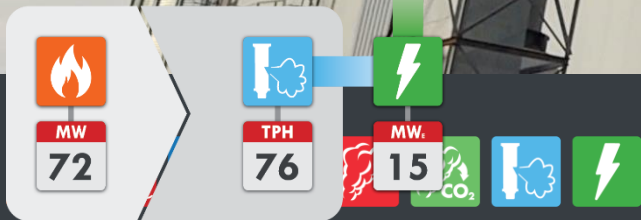


vyncke.com

CLEAN ENERGY TECHNOLOGY
VYNCKE









Nestlé

TUTBURY | UNITED KINGDOM

VYNCKE



MW
5.2



TPH
7



vyncke.com

CLEAN ENERGY TECHNOLOGY

VYNCKE

- Rozsah dodávky: Stripped scope/Turnkey (kromě stavebních prací)
- Kapacita do 100.000 tůn odpadů ročně
- Technologie Spalování na posuvném roštu
- Média



Přehřátá voda:

Min teplota zpátečky : 130°C

Standardní delta T: 30°C

Maximální výstupní teplota: 180°C



Nasycená pára:

Maximální pracovní tlak: 40barů



Přehřátá pára:

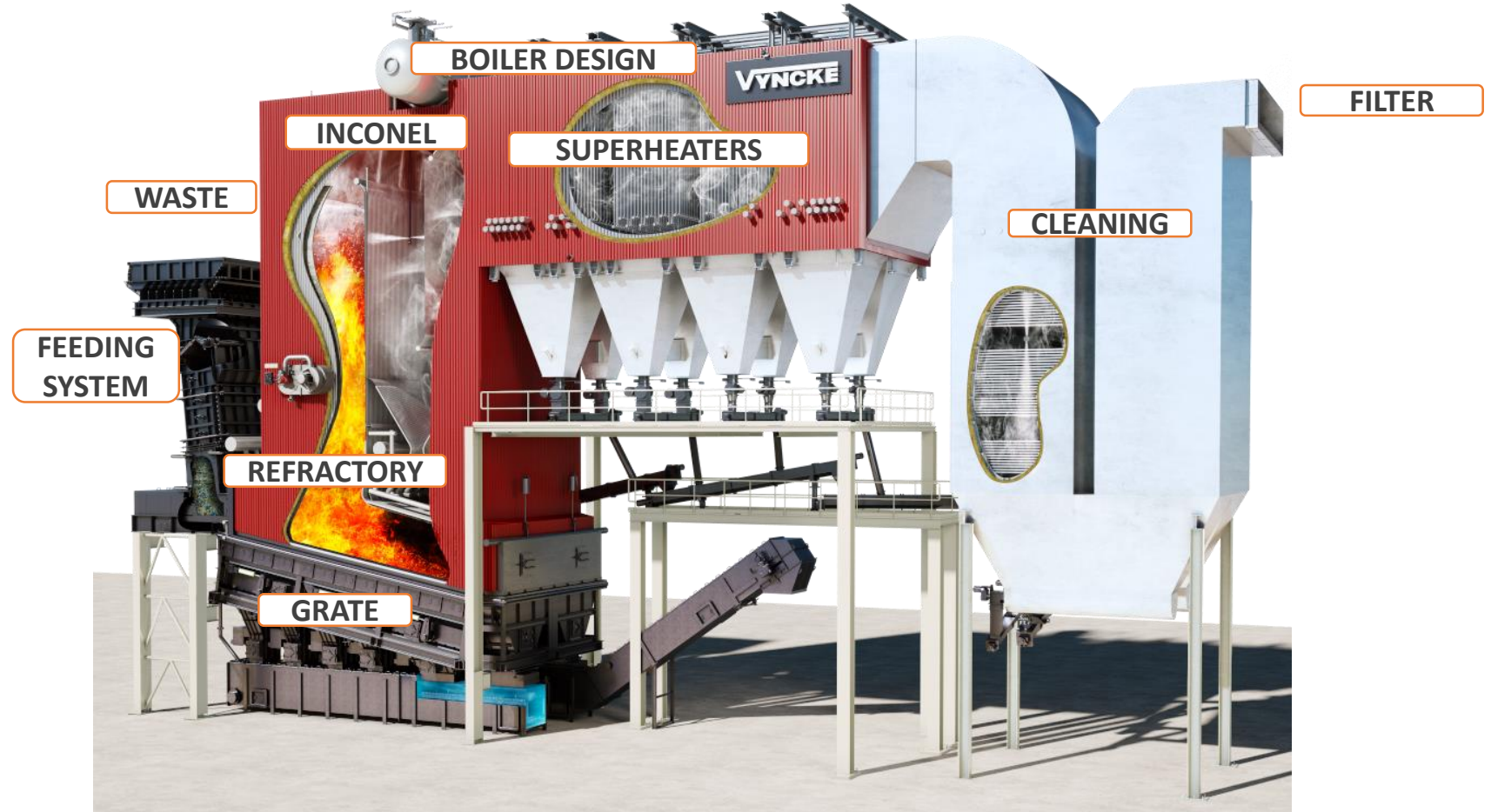
Maximální pracovní tlak: 40barg



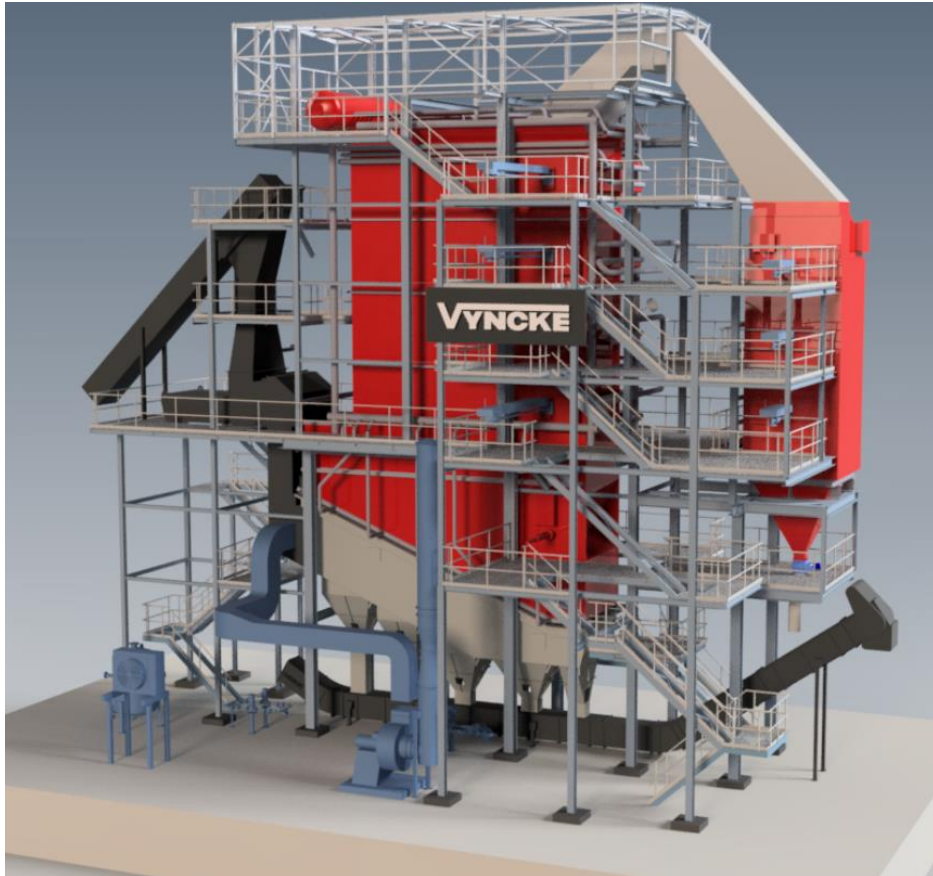
Maximální teplota přehřátí : 400°C

	12 000 kJ/kg		18 000 kJ/kg	
5 MW	1,5 tph	12 000 tpy	1 tph	8 000 tpy
10 MW	3 tph	24 000 tpy	2 tph	16 000 tpy
15 MW	4,5 tph	36 000 tpy	3 tph	24 000 tpy
20 MW	6 tph	48 000 tpy	4 tph	32 000 tpy
30 MW	9 tph	72 000 tpy	6 tph	48 000 tpy
40 MW	12 tph	96 000 tpy	8 tph	64 000 tpy
60 MW	18 tph	144 000 tpy	12 tph	96 000 tpy

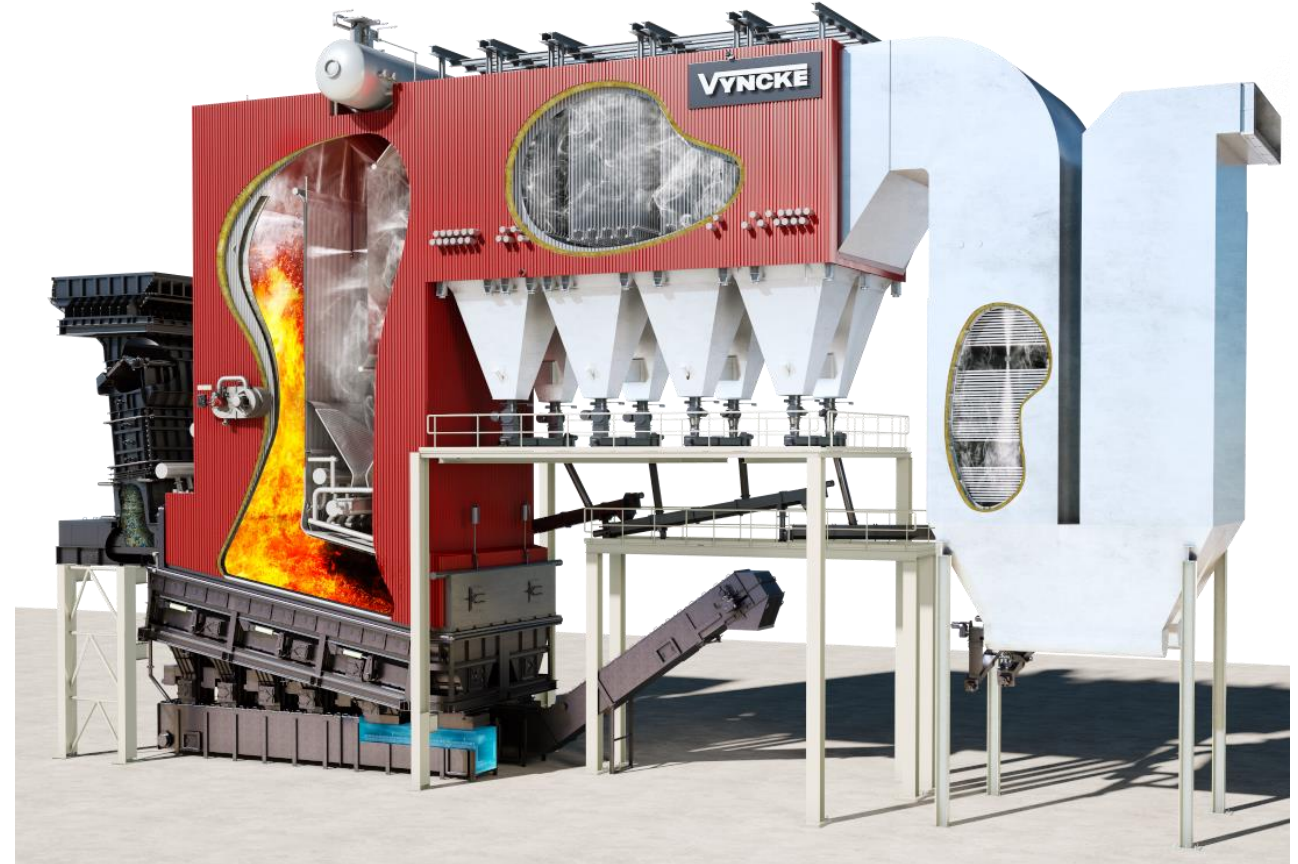
- Analýza paliva
- Systém podávání paliva
- Roštové ohniště
- Vyzdívka
- Inconel
- Konstrukční parametry kotle
- Přehřívaky páry
- Čištění
- Filter



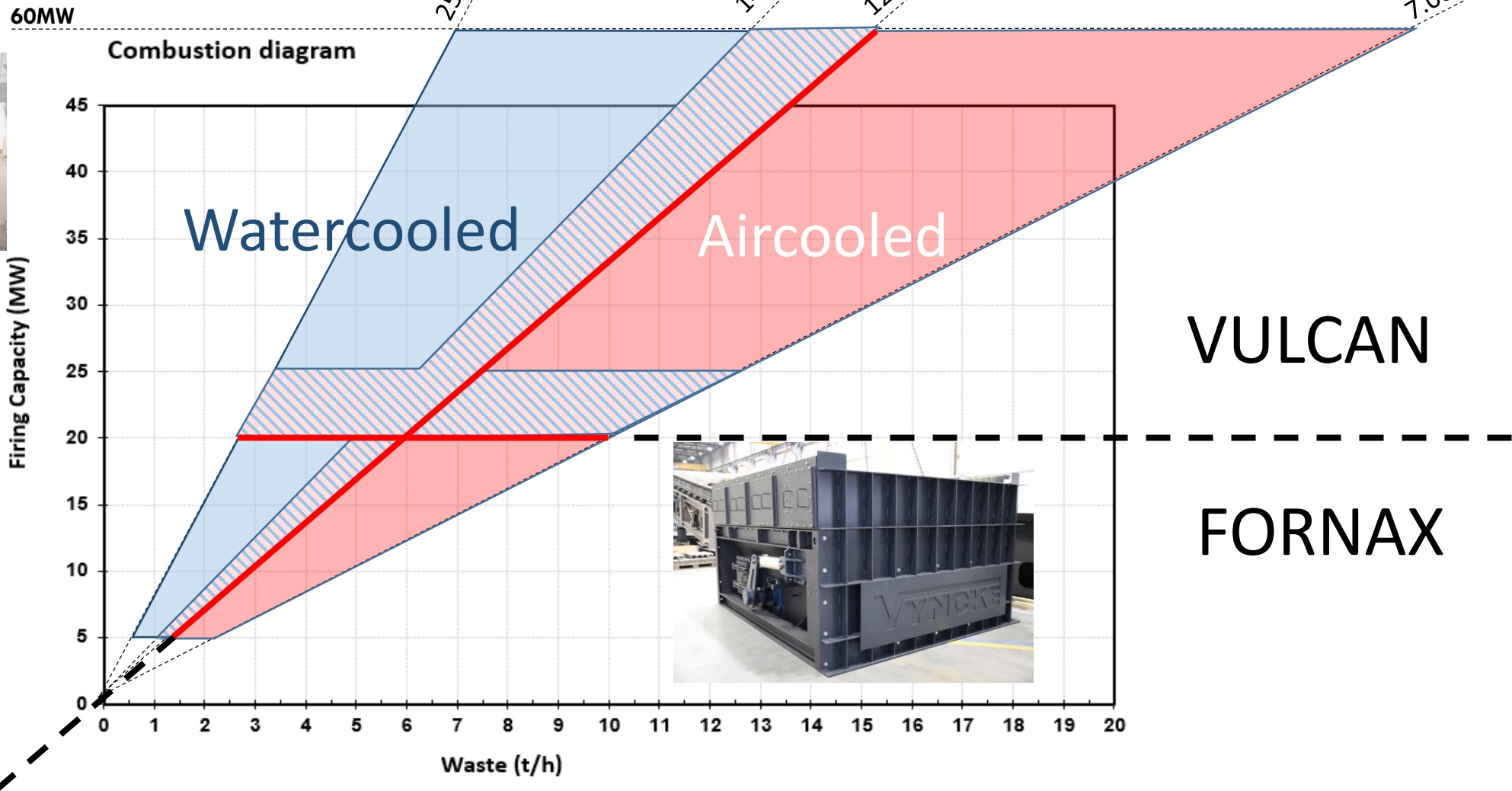
WTB-V



WTB-H

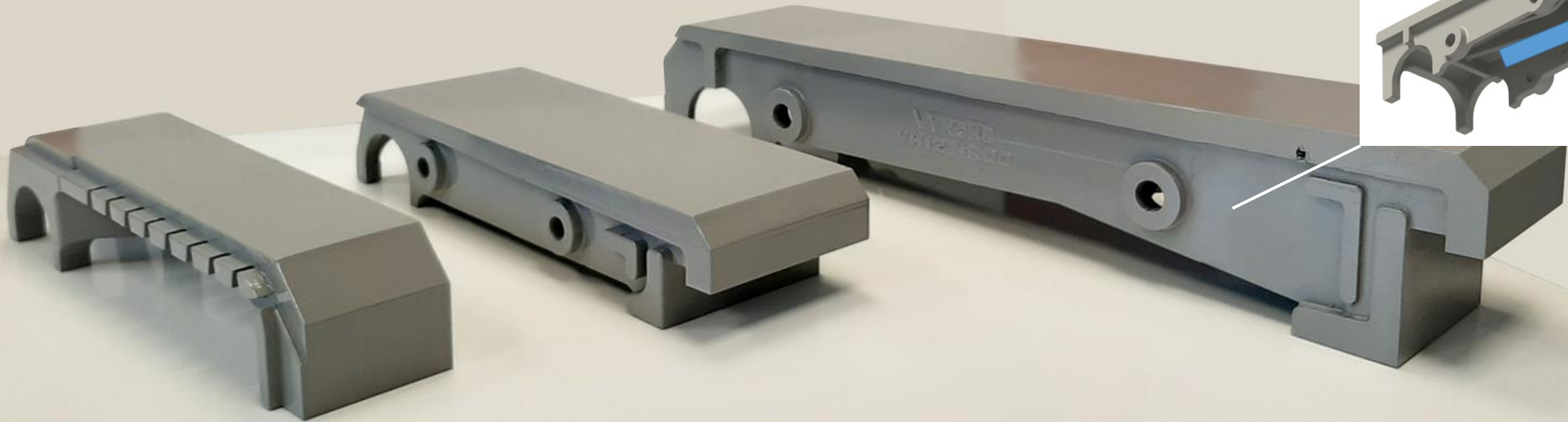


ENERGETICKÉ VYUŽITÍ ODPADŮ – NAŠE TECHNOLOGIE





AIRCOOLED STEPGRATE



DAS - ONE

DAS - FORNAX

DAS - VULCAN

HEIGHT ELEMENT

DENSITY FUEL

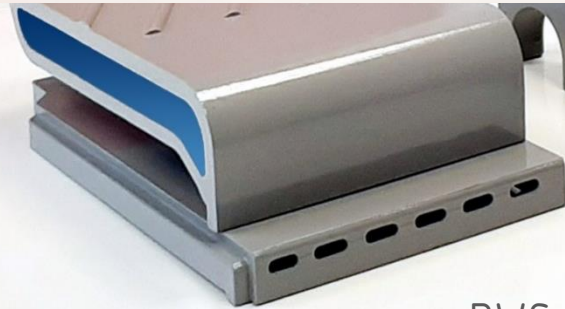
> 150 kg/m³

> 100 kg/m³





WATERCOOLED STEPGRATE



DWS - ONE



DWS - FORNAX

DWS - VULCAN

STROKE LENGTH

HEIGHT ELEMENT

DENSITY FUEL

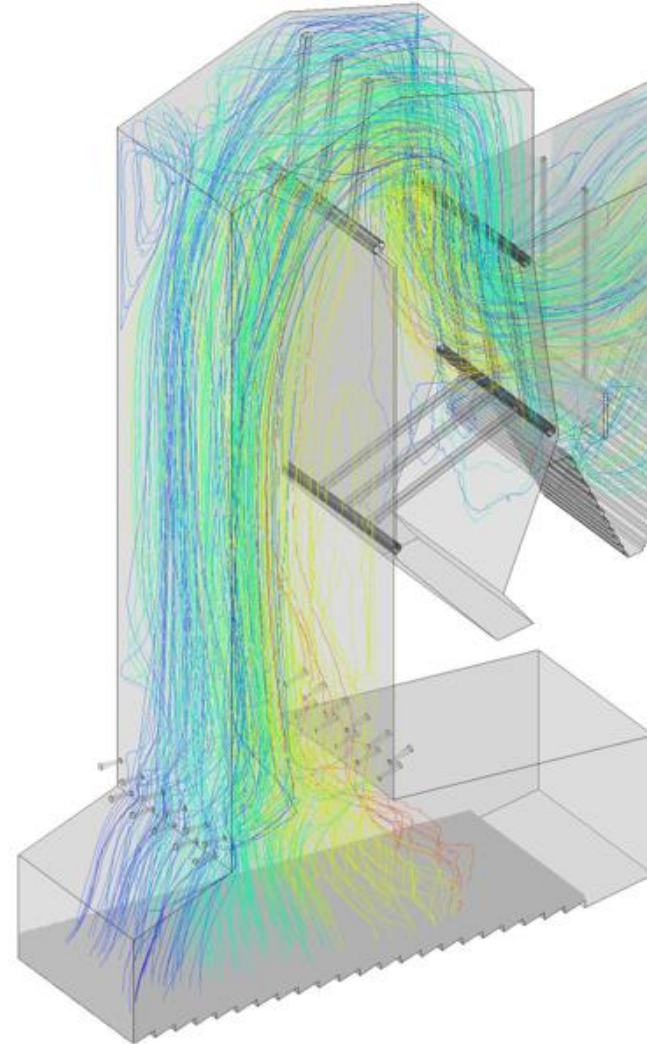
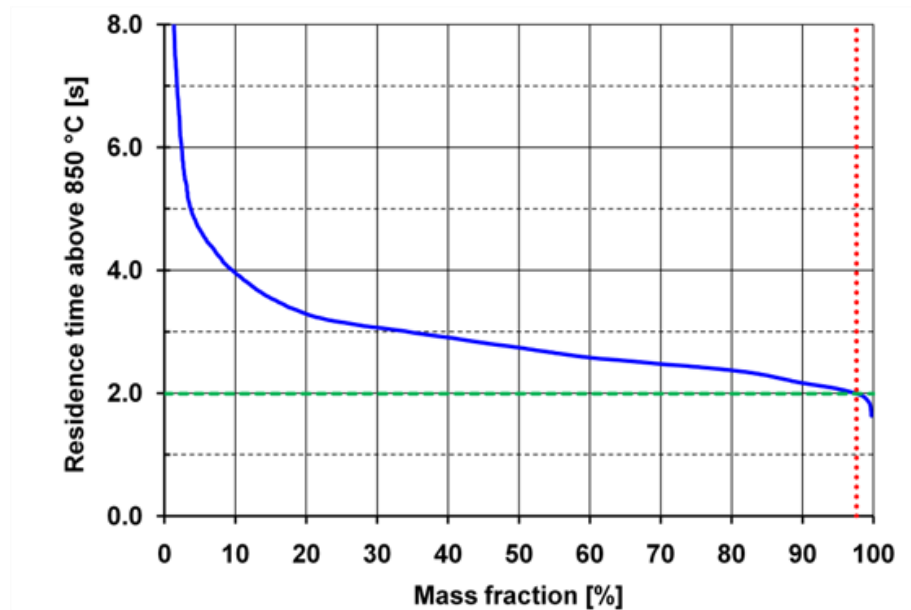
> 150 kg/m³

> 100 kg/m³

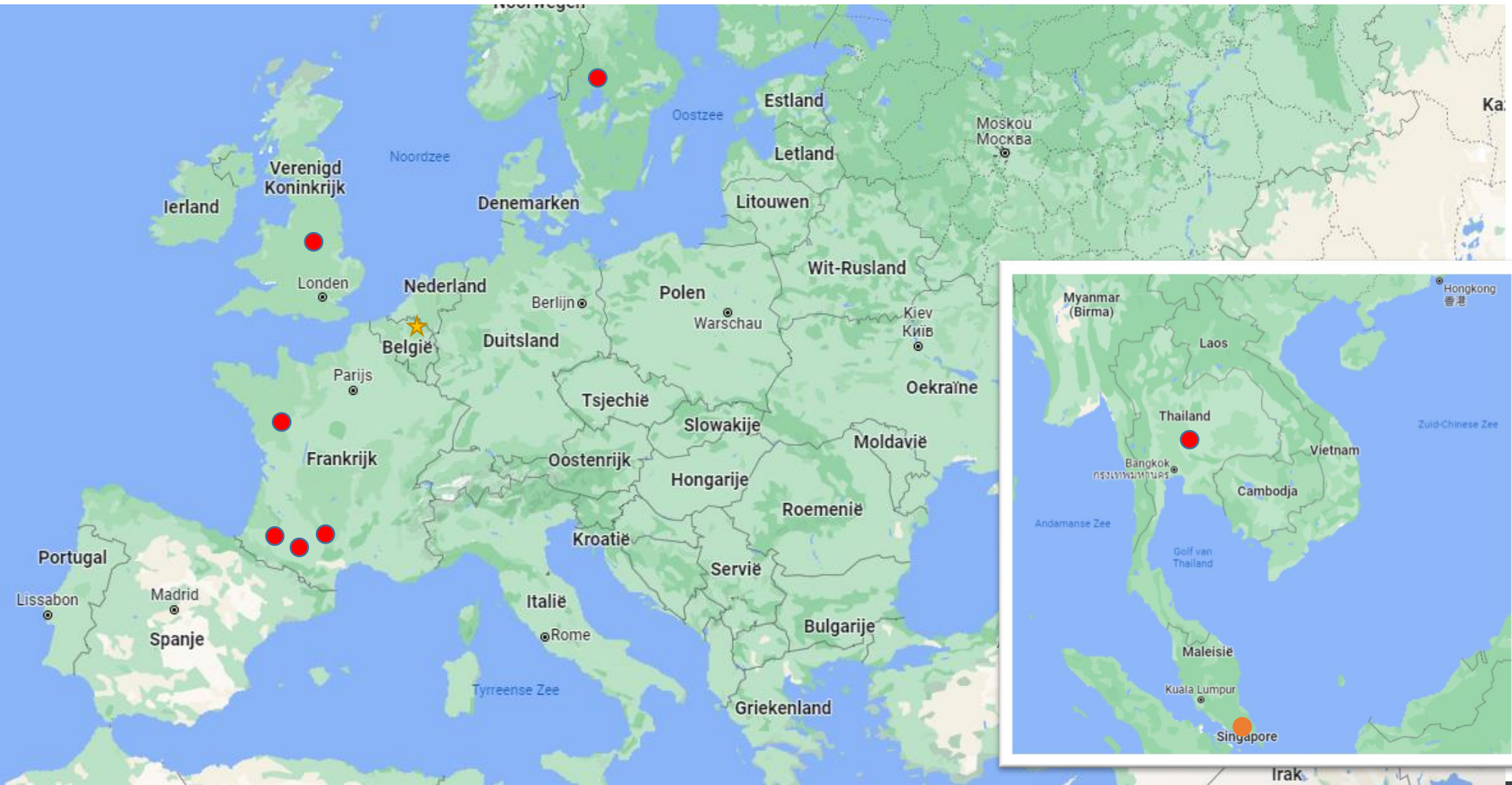


Simulační modely (2s residence time)

- Thermal calculations VYNCKE design software
- CFD (Computational Fluid Dynamics)



● RDF





PHICHIT PROVINCE | THAILAND



CLOVER

PHICHIT PROVINCE, THAILAND



Commissioned	December 2020
Fuel	RDF
Plant efficiency	> 85 %
Steam pressure	40 bara
Steam temperature	435 °C





KANTOR ENERGY-EQUITIX*

BADDESLEY, UNITED KINGDOM



Commissioned	March 2021
Fuel	RDF
Plant efficiency	> 85%
Steam pressure	40 bara
Steam temperature	400 °C





VÄRMEVÄRDEN

SÄFFLE, SWEDEN



Commissioning	October 2021
Fuel	RDF
Plant efficiency	83 %
Hot water temperature	160 °C
NO _x emissions	< 75 mg/Nm ³





URBASER TRIFYL

TRIFYL, FRANCE



Commissioning	September 2023
Fuel	RDF
Plant efficiency	81 %
Hot water temperature	160 °C
Dust emissions	< 15 mg/Nm ³





URBASER LESCAR

PAU, FRANCE



Commissioning	September 2023
Fuel	MSW
Plant efficiency	82%
Steam pressure	40 bara
Steam temperature	370°C



MW
17



TPH
19



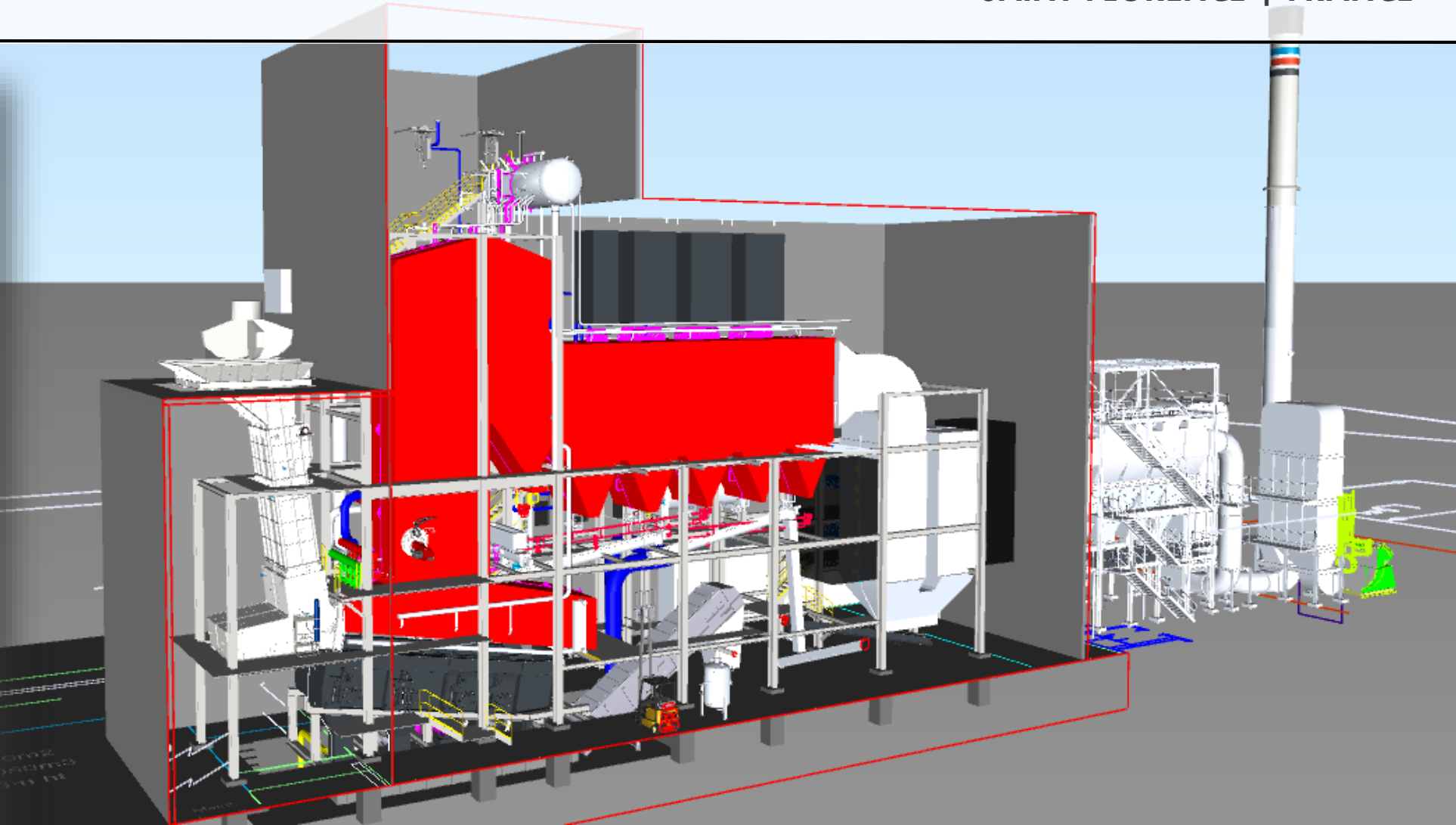
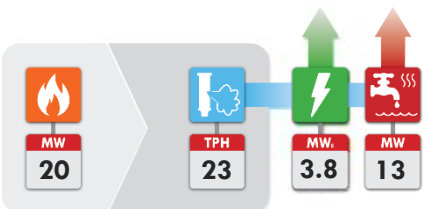


PIVETEAUBOIS

SAINT-FLORENCE, FRANCE



Notice to proceed	January 2023
Fuel	RDF
Plant efficiency	> 85%
Steam pressure	40 bara
Steam temperature	380°C






NESTE ENERGY AVENIR


LANNEMAZAN, FRANCE



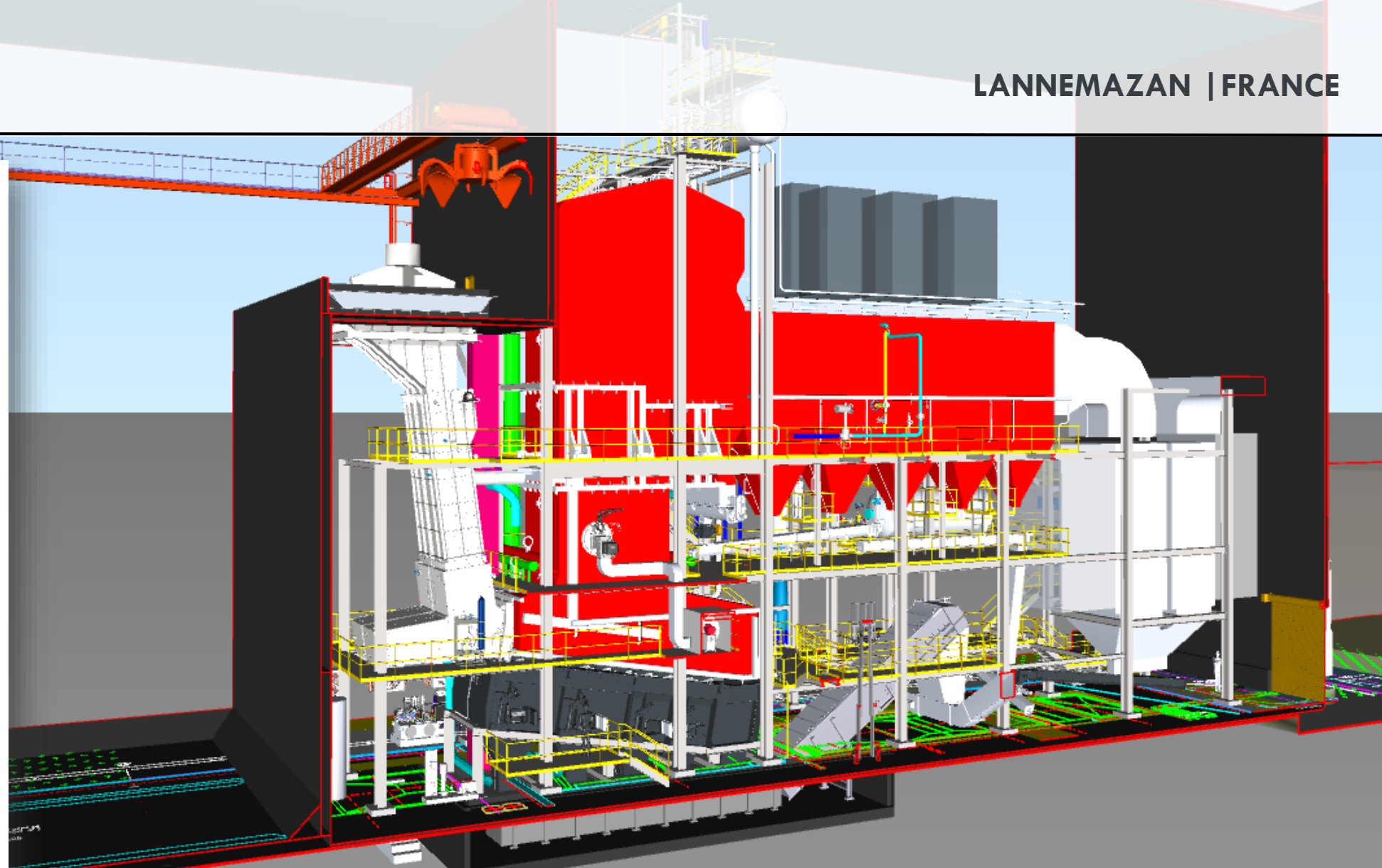
Notice to proceed	November 2023
Fuel	RDF
Plant efficiency	> 85%
Steam pressure	40 bara
Steam temperature	365°C



MW
20



TPH
23





No waste to lose